



California Quarries

From the American Era Through 1914



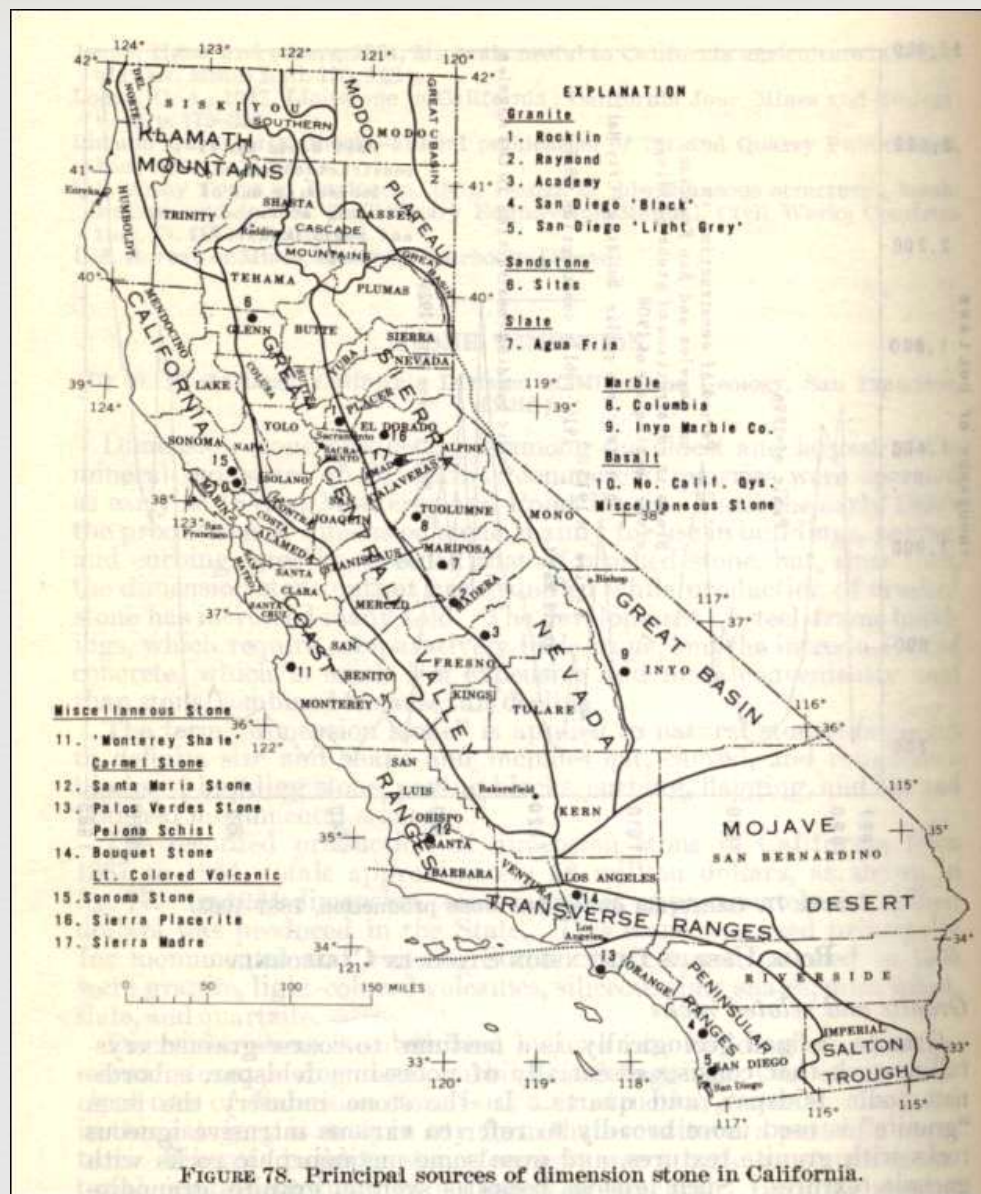


FIGURE 78. Principal sources of dimension stone in California.

Map of Principal Sources of Dimension stone in California

Mineral Resources of California, Bulletin 191, State of California Division of Mines and Geology, San Francisco, 1966, pp. 402.



**Present-day Photo of the Washington Monument
Located in Washington, D.C.**

from Wikipedia.

List of the Stones Quarried in California as of 1906

Stone	California Counties	
Granite	Los Angeles	Sacramento
	Madera	San Bernardino
	Nevada	San Diego
	Placer	Tuolumne
	Riverside	Tulare
Limestone	Amador	Monterey
	Calaveras	Placer
	Colusa	Riverside
	Napa	San Bernardino
	Santa Barbara	Inyo
	Butte	Santa Cruz
	El Dorado	Santa Clara
	Contra Costa	Shasta
	Los Angeles	Sonoma
	Kern	Tuolumne
Marble	Mono	
	Amador	Inyo
	Riverside	Tuolumne
	San Bernardino	
Sandstone	Colusa	Santa Clara
	Los Angeles	Ventura
	Santa Barbara	Yolo
Slate	El Dorado County	
Serpentine	Santa Catalina Island	San Bernardino County (as Verde Antique)
Porphyry	San Luis Obispo	
Volcanic Tuff	Calaveras	San Luis Obispo
	Napa	Sonoma



ILL. No. 1. COMPOSITE ARCH, CONSTRUCTED OF CALIFORNIA GRANITE, SANDSTONE, MARBLE, TERRA COTTA, SLATE, TILING, PRESSED AND GLAZED BRICK, AT THE ST. LOUIS EXPOSITION, UNDER THE DIRECTION OF LEWIS E. AUBURY, STATE MINERALOGIST.

“Composite Arch, constructed of California granite, sandstone, marble, terra cotta, slate, tiling, pressed and glazed brick, at the St. Louis Exposition, under the direction of Lewis E. Aubury, State Mineralogist.” (frontispiece)

Stone Imported into California in the Early Years



**Interior of Marble Quarry
at West Rutland, Vermont**



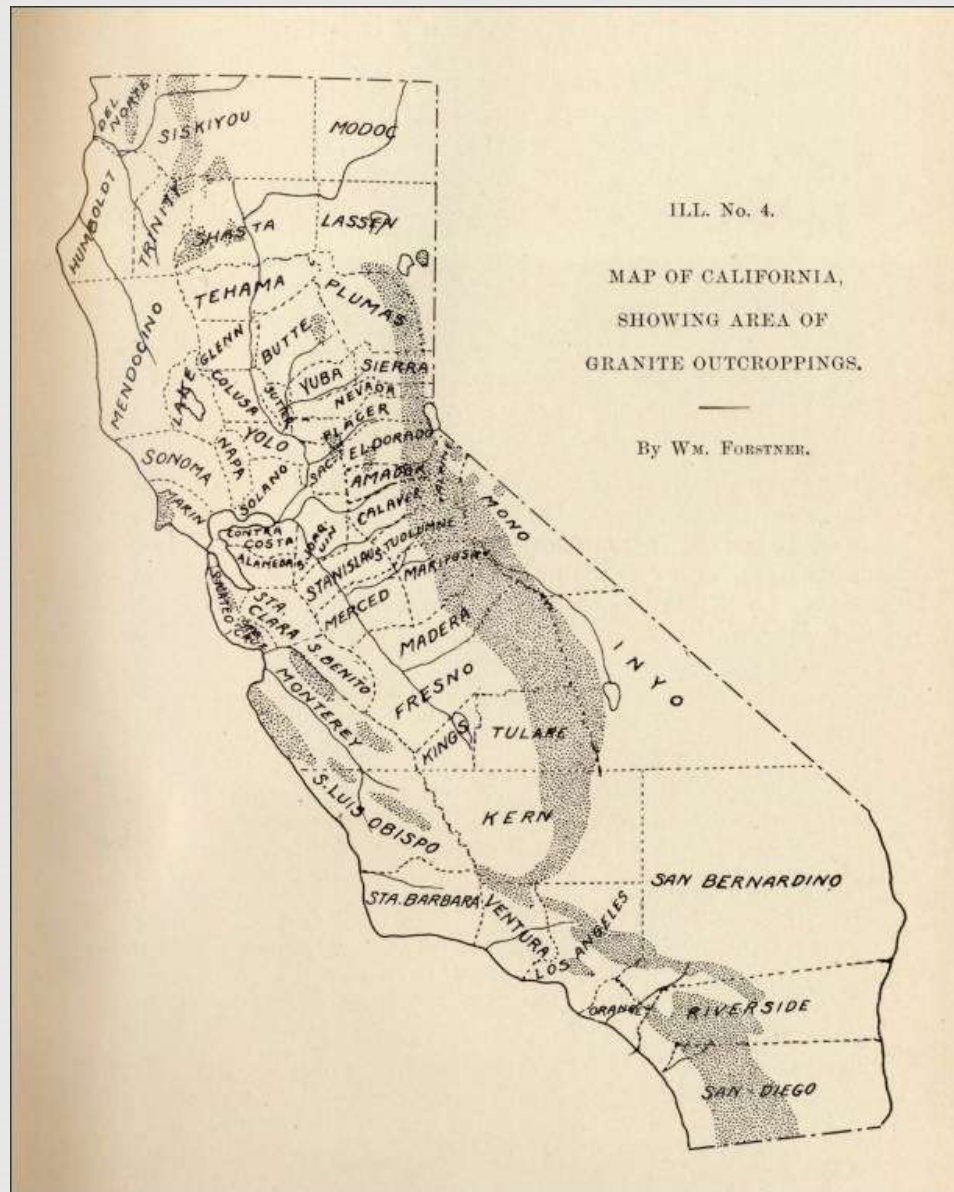
**Oglesby Granite Quarry
in Elberton, Georgia**



**Marble Quarries of Carrara,
at Carrara, Italy**



**Rubislaw Granite Quarry,
Aberdeenshire, Scotland**



Map of California Showing Area of Granite Outcroppings.

“Academy Black” Granite Quarry, Northwest of Clovis, Fresno County, California





Photo No. 82. In the quarry of Academy Granite Company, near Academy, Fresno County.

**In the quarry of Academy Granite Company,
near Academy, Fresno County¹³**

**Block of stone (13,280 pounds)
from Academy Granite Company,
Fresno County¹³**



Photo No. 84. Block of stone (13,280 pounds) from Academy Granite Company,
Fresno County.

Madera County Granite Quarries in California



**The Raymond Granite Company's Knowles Granite
&
McGilvray-Raymond Granite Co. Quarries**

Early Photographs of the Knowles / Raymond Granite Co. Quarry



**Raymond Granite Company's quarry near Raymond,
Madera County, California. Panoramic view of quarry from below.**

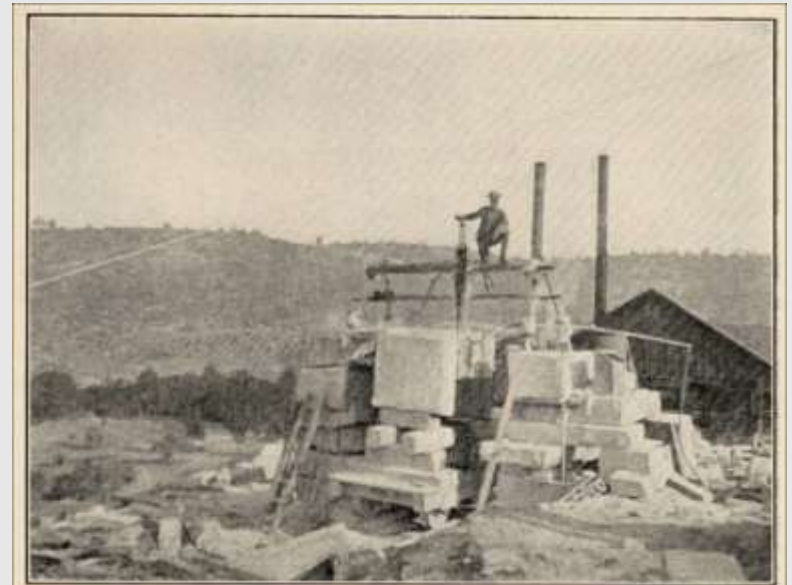
Early Photographs of the Knowles / Raymond Granite Co. Quarry



ILL. No. 1. RAYMOND GRANITE QUARRY, MADERA COUNTY.

Raymond Granite Quarry, Madera County

**Raymond Granite Quarry, Madera County.
Showing use of quarry bar.**



ILL. No. 2. RAYMOND GRANITE QUARRY, MADERA COUNTY.
Showing use of quarry bar.

Present-Day Photographs of the Raymond Granite Quarry
owned by Cold Spring Granite
(Photographs by Peggy B. Perazzo, 1998)



Raymond Granite
Upper Quarry – “Sierra White” Granite

Raymond Granite
Lower Quarry – “Sierra White” Granite



Structures Constructed Using Raymond “Sierra White” Granite



Fairmount Hotel, San Francisco.
3 Lower Floors of Raymond Granite.

San Francisco's New Post office.
Exterior of Raymond Granite.



Raymond Granite Quarry (left) & McGilvray Granite Quarry (right)

(Photos by Peggy B. Perazzo, September 2010)

Below are present-day photos of the 2 quarries in Madera County that were producing large amounts of granite referred to in the California Division of Mines report of 1906.



Early Photographs of the McGilvray Granite Quarry



General View of the McGilvray Granite Works at Knowles

(postcard photograph; early 1900s)



**Area where the McGilvray Granite Works
was once located opposite the quarry**

(Photograph by Peggy B. Perazzo, September 2011)



**McGilvray Raymond Granite Co.,
Raymond, Cal.**

(postcard photograph; early 1900s)

Early Photographs of the McGilvray Granite Quarry

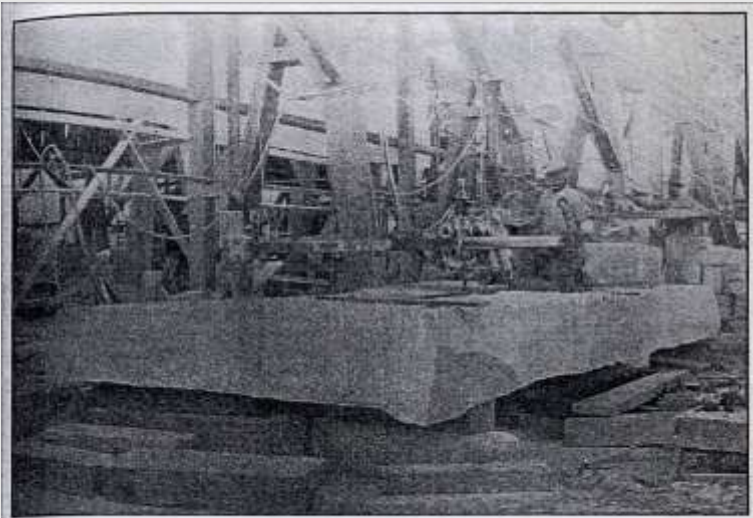


Photo No. 6. Dressing a platform stone (size 21 feet by 6 feet by 2 feet) for the San Francisco City Hall. McGilvray Raymond Granite Company, Madera County, Cal.

**Dressing a platform stone
(size 21 feet by 6 feet by 2 feet)
for the San Francisco City Hall.**

**McGilvray Raymond Granite Company,
Madera County, Cal.**

**Sculptural Carving, plaster model at right
for San Francisco City Hall.**

**McGilvray-Raymond Granite Company,
Madera County, Cal.**

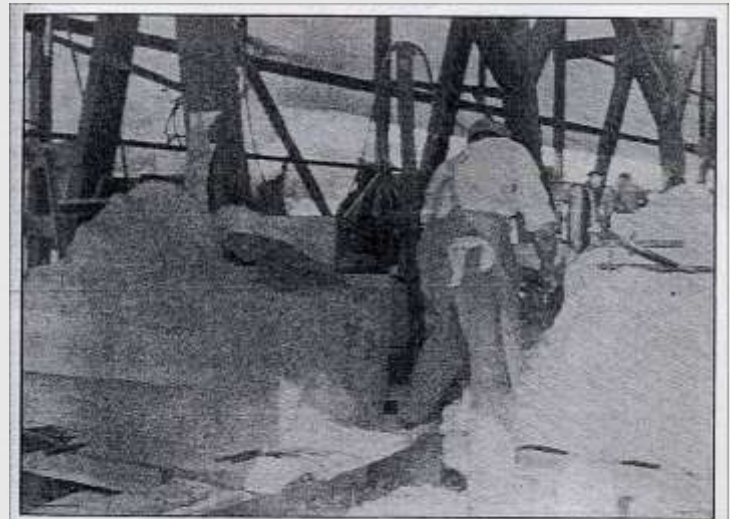


Photo No. 8. Sculptural Carving (plaster model at right), for San Francisco City Hall. McGilvray Raymond Granite Company, Madera County, Cal.

Present-Day Photographs of the McGilvray Granite Quarry

(Photographs taken by Peggy B. Perazzo, 9/30/10)



Structures Constructed from Granite Quarried from the McGilvray Granite Quarry in Knowles

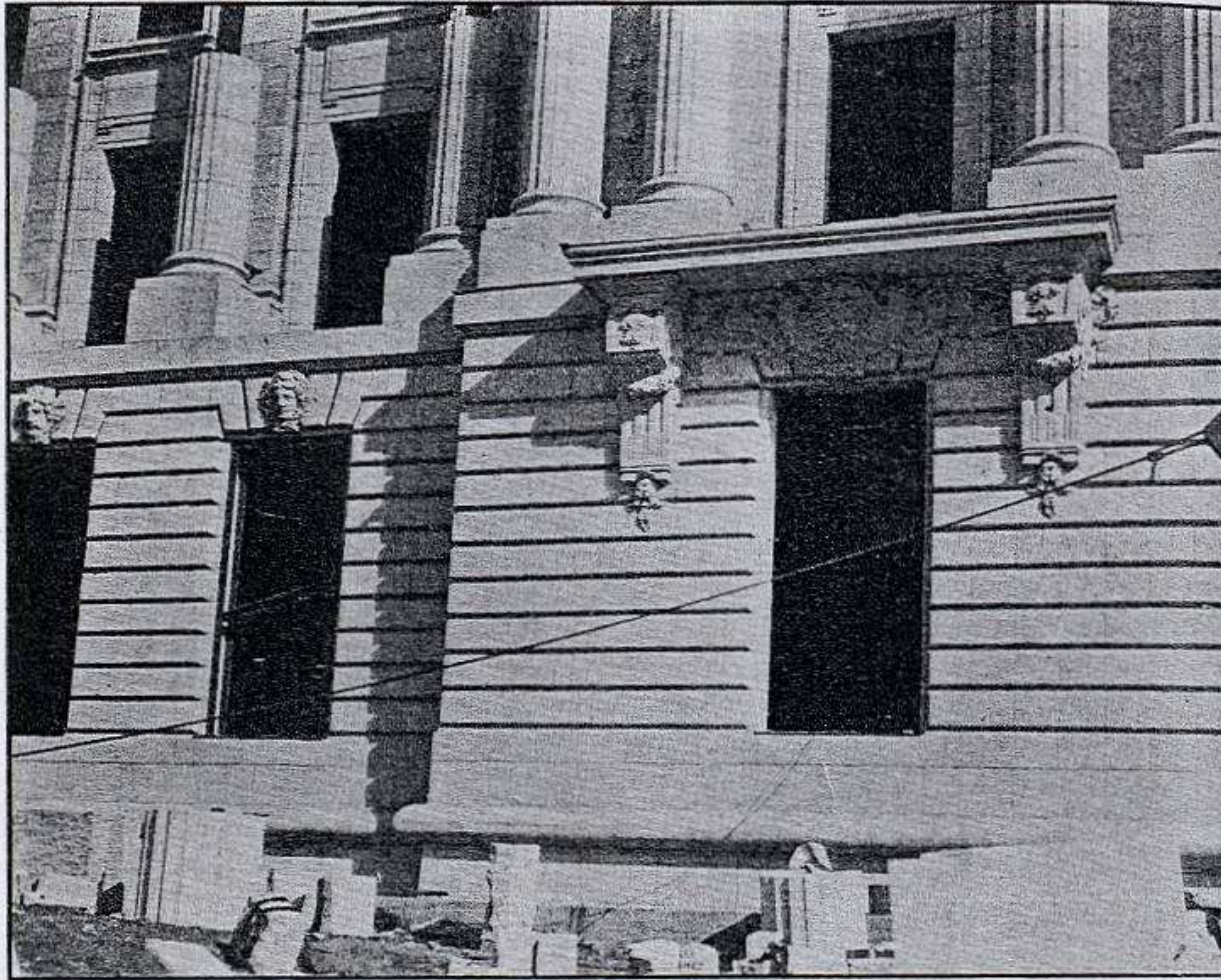


Photo No. 129. Sculptural detail on City Hall, San Francisco. Stone from McGilvray Raymond Granite Company, Madera County, California.

Vertical stone saw located at the Raymond Museum



Quarry / stone saw in the Bates quarry in 1993

Folsom Granite Quarry, Folsom, Sacramento County, California
(1856/1857 – 1947)



Folsom Granite Quarry, Folsom, Sacramento County, California

(1856/1857 – 1947)



**Portion of Folsom Prison wall constructed
of granite from the Folsom Prison Granite Quarry**
(Photo by Peggy. B. Perazzo)

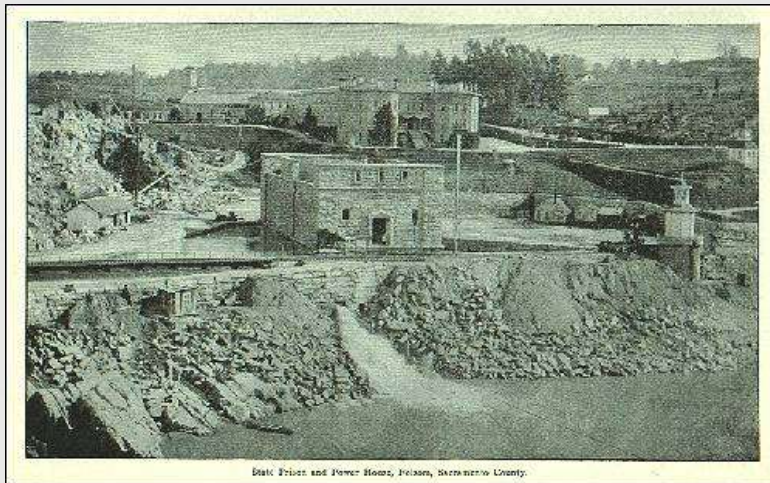
Folsom Granite Quarry, Folsom, Sacramento County, California



Granite quarry at Folsom State Prison, Sacramento County.
Worked by the convicts at the prison. (circa 1919)



View down the American river from the Folsom Prison dam, showing granite outcrops along the river bed and along cuts made for the outlet canal. The prison buildings and walls were built of granite blocks by convict labor.



Folsom State Prison & Power House,
Sacramento County (postcard photograph)



Dam across the American River at Folsom State Prison,
built of granite blocks from the prison quarry by convict labor.

Penryn and Rocklin Quarries, Placer County, Ca.



Griffith Quarry, Penryn



Rocklin Quarry, Rocklin

Penryn Granite Quarry

(Photographs by Peggy B. Perazzo)



Penryn Granite Quarry Office & Museum

(Photographs by Peggy B. Perazzo)



Griffith Quarry Office (now the museum)



Close-up of Penryn Post Office wall showing drill marks



**Plugs and Feathers in piece
of Penryn Granite**



Piece of Penryn Granite Outside of Museum

Photographs of the Past Rocklin Quarry Industry



Rocklin Granite Co. Advertisement
from the San Jose City Directory – 1896-7,
F. M. Husted, Publisher, San Francisco, Cal.



Granite quarry near Rocklin, Cal. (postcard photo)

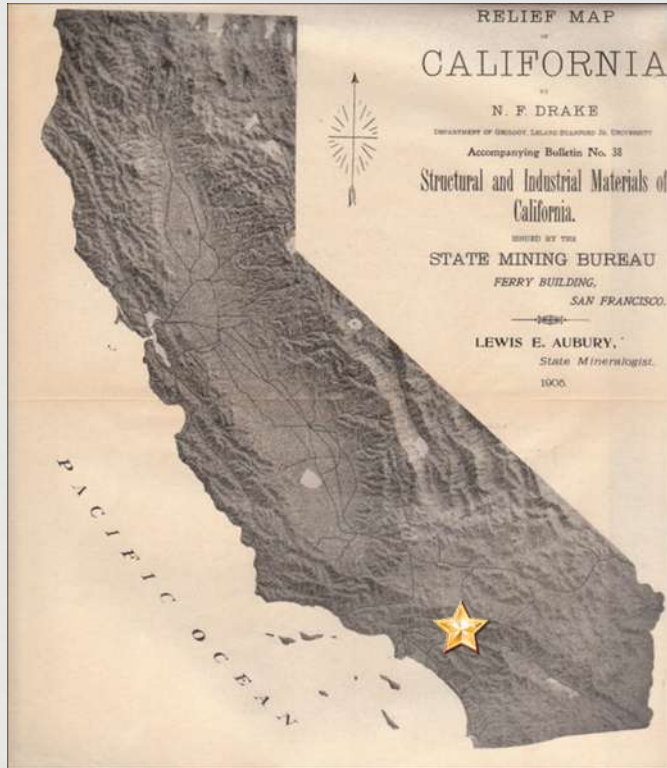


Mantyla's Granite Quarry, Rocklin, Placer County



California Granite Quarry at Rocklin

Riverside County Granite Quarries, California



Riverside County Granite Quarries, California



ILL. No. 11. GRANITE QUARRY, CORONA, RIVERSIDE COUNTY.

Granite Quarry at Corona, Riverside County (circa 1906)

Casa Blanca Granite Quarries
Southeast of the Casa Blanca Railway Station, Riverside County³
(Granite used in building the San Pedro Breakwater 1899 and 1911)



ILL. No. 14. CASA BLANCA GRANITE QUARRY, RIVERSIDE COUNTY.

**Casa Blanca Granite Quarry,
Riverside County**



ILL. No. 15. CASA BLANCA QUARRY No. 2 (GRANITE), RIVERSIDE COUNTY.

**Casa Blanca Quarry No. 2 (Granite),
Riverside County**

Riverside County Granite Quarries

(1894? – Present Day)



ILL. No. 12. STONE-SAWING MACHINE. BLY BROS. STONE COMPANY, LOS ANGELES.

Stone-sawing machine. Bly Bros. Stone Company, Los Angeles



ILL. No. 13. MACHINE SURFACING GRANITE AT BLY BROS.' STONE YARDS, LOS ANGELES.

Machine surfacing granite at Bly Bros.' stone yards, Los Angeles



ILL. No. 14. H. W. HELLMAN'S BUILDING, LOS ANGELES. FIRST TWO STORIES CONSTRUCTED OF RIVERSIDE GRANITE.

Machine surfacing granite at Bly Bros.' Stone Yards, Los Angeles
H. W. Hellman Building, Los Angeles, First 2 stories constructed of
Riverside Granite. (Bly Bros. Stone Co)

San Bernardino County, California



San Bernardino County, California



ILL. No. 17. DECLEZ GRANITE QUARRY, DECLEZ, SAN BERNARDINO COUNTY.

**Declez Granite Quarry, Declez,
San Bernardino County**

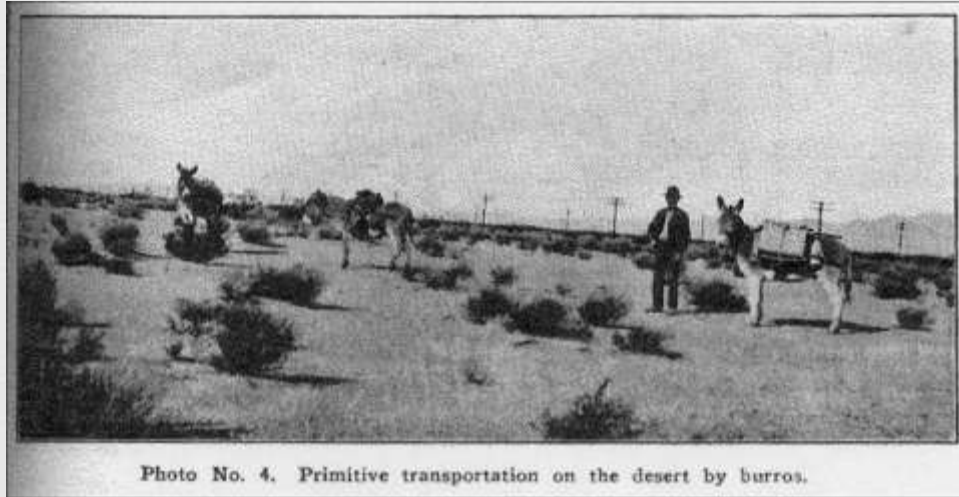


ILL. No. 18. FARMERS AND MERCHANTS NATIONAL BANK BUILDING, LOS ANGELES.
The Granite in this building was quarried in Bly Brothers' Quarry,
Declez, San Bernardino County.

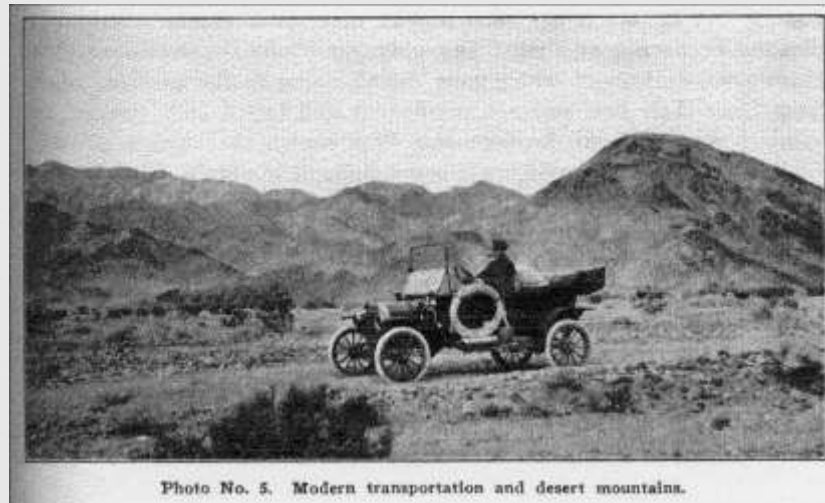
**Farmers & Merchants
National Bank Building, Los Angeles.**

The granite in this building was quarried in
Bly Brothers' Quarry, Declez, San Bernardino

San Bernardino County, California (Contd.)

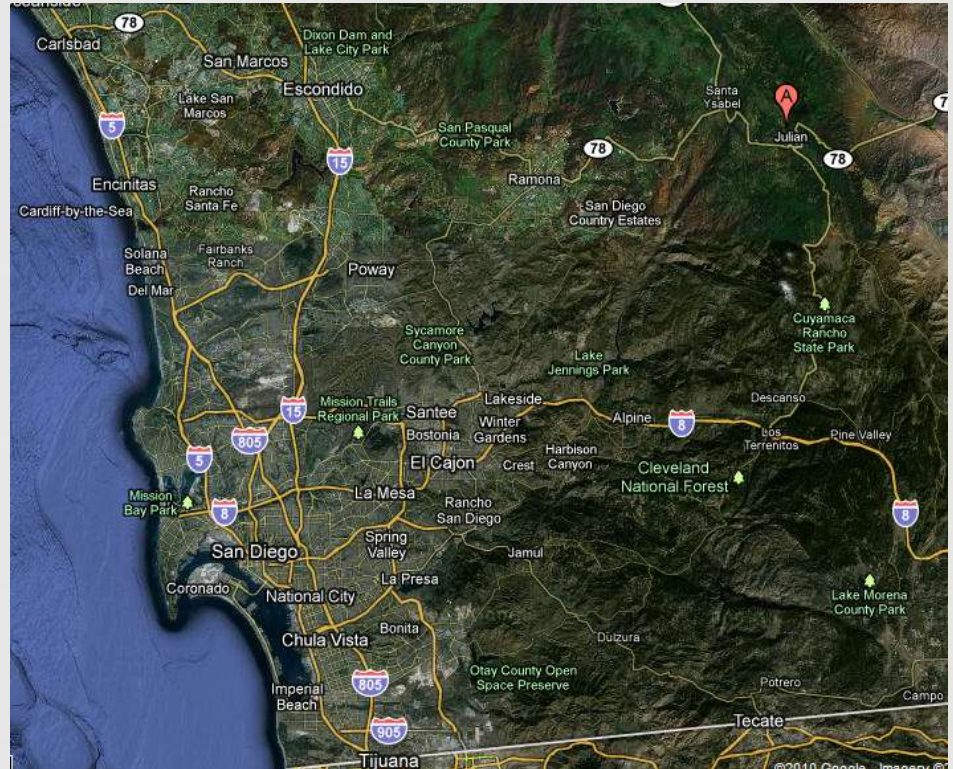
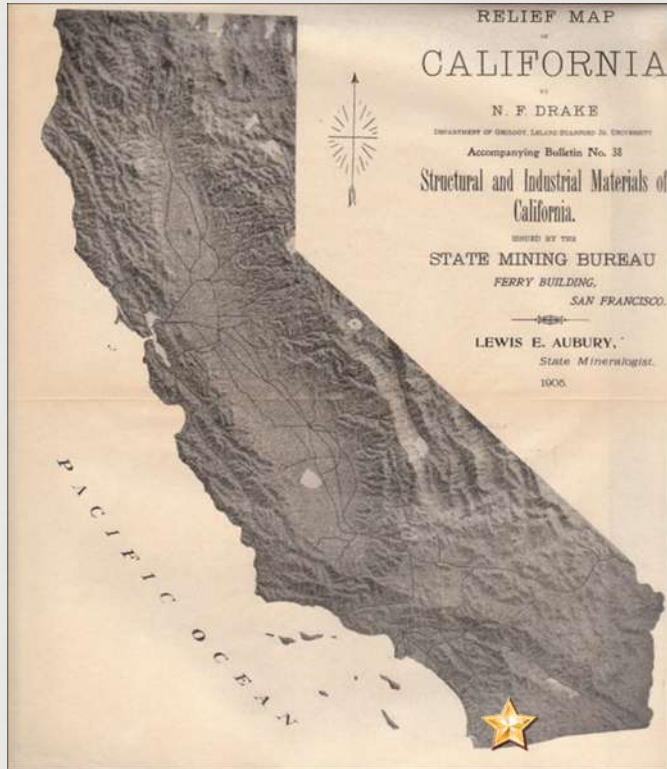


Primitive transportation on the desert by burros

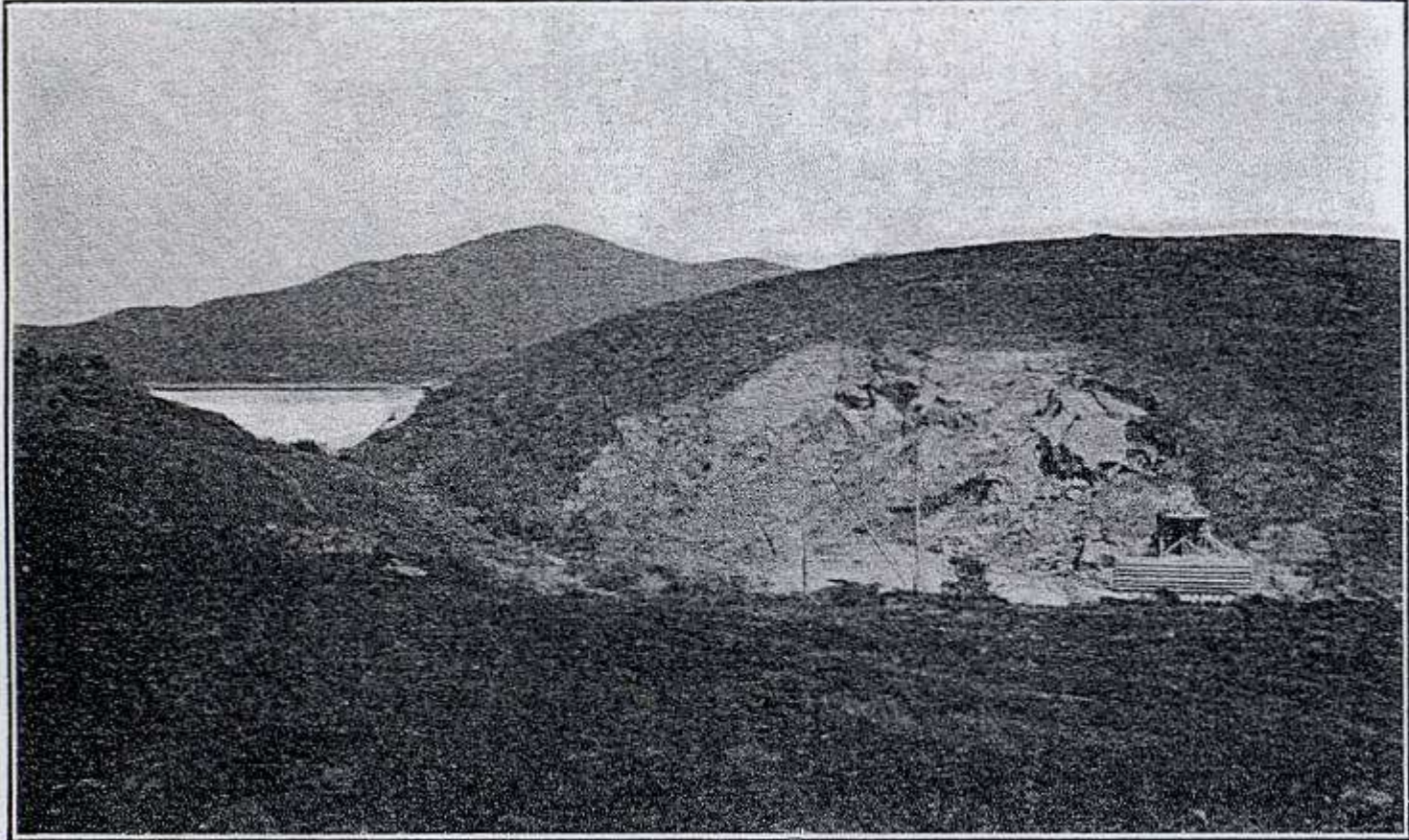


Modern transportation for desert & mountains.
(circa 1919?)

San Diego County, California



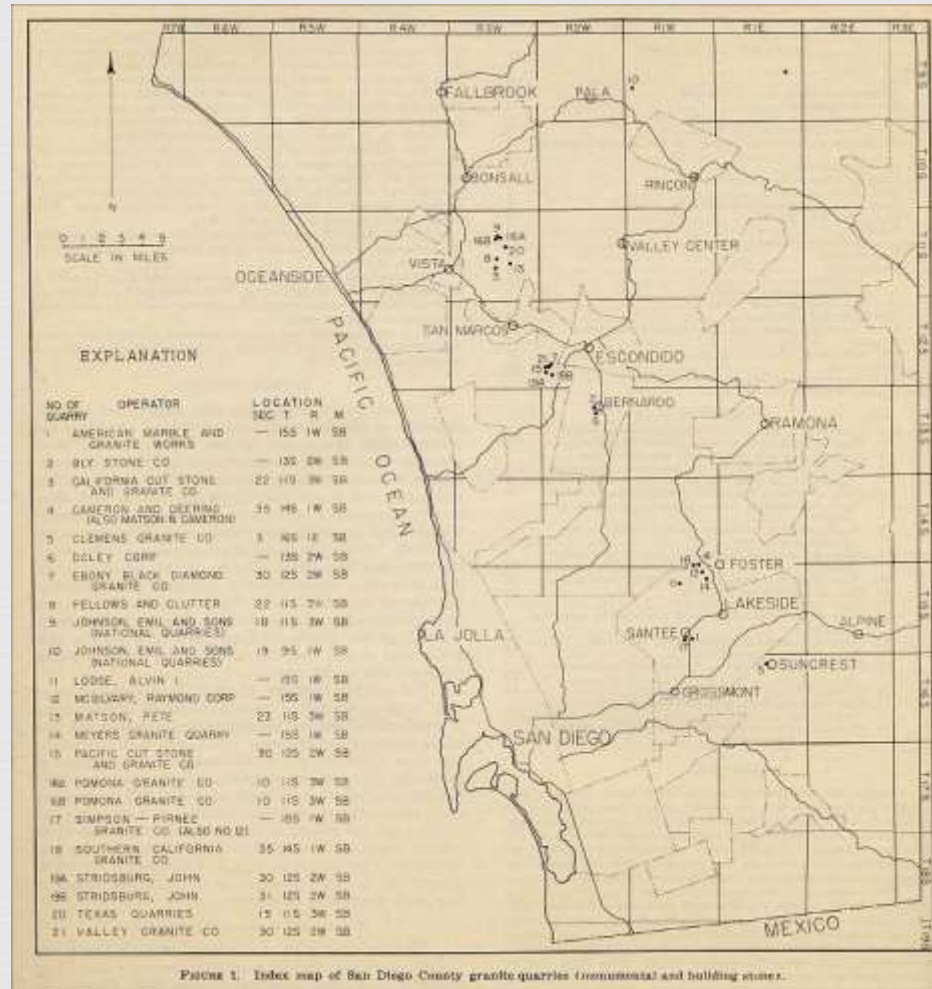
San Diego County, California (Cont'd)
(1898 – Present Day)



Sweetwater Quarry, San Diego Stone Co. Sweetwater Dam and
Mt. St. Miguel. F.J.H.M. Photo.

Santee Granite Quarry, San Diego County.

San Diego County, California (Cont'd) (1898 – Present Day)



**Index map of San Diego County granite quarries
(monumental and building stone).**

San Diego County, California (Cont'd) (1898 – Present Day)

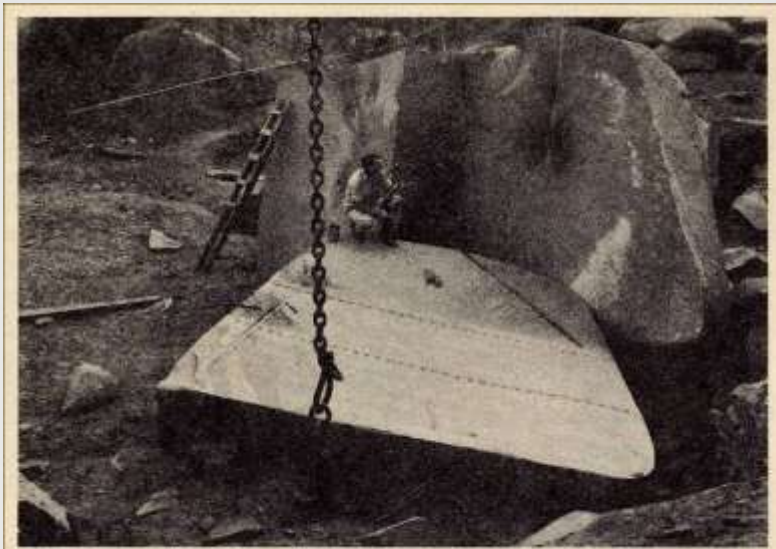


FIGURE 2. Boulder of black granite being worked in quarry. Emil Johnson and Sons quarry, Vista.

**Boulder of black granite being worked in quarry.
Emil Johnson and Sons quarry, Vista.**

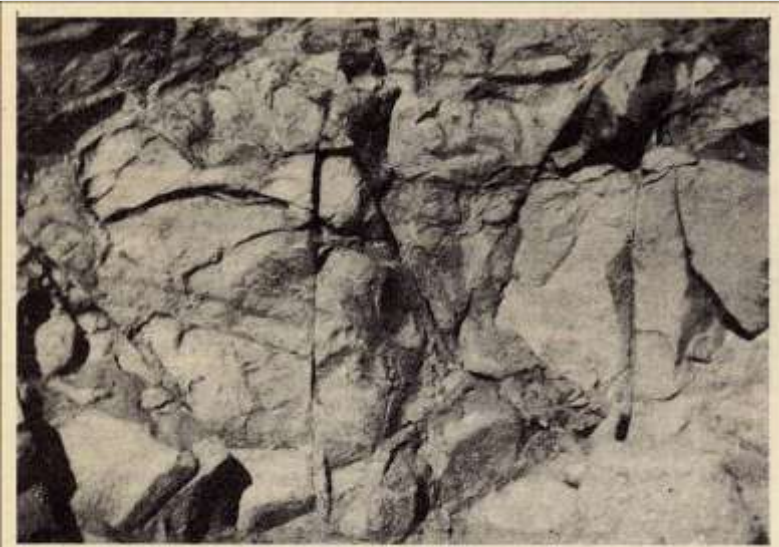


FIGURE 12. Partly weathered rock traversed by numerous fractures. Emil Johnson and Sons quarry, Vista.

**Partly weathered rock traversed by numerous
fractures. Emil Johnson and Sons quarry, Vista.**

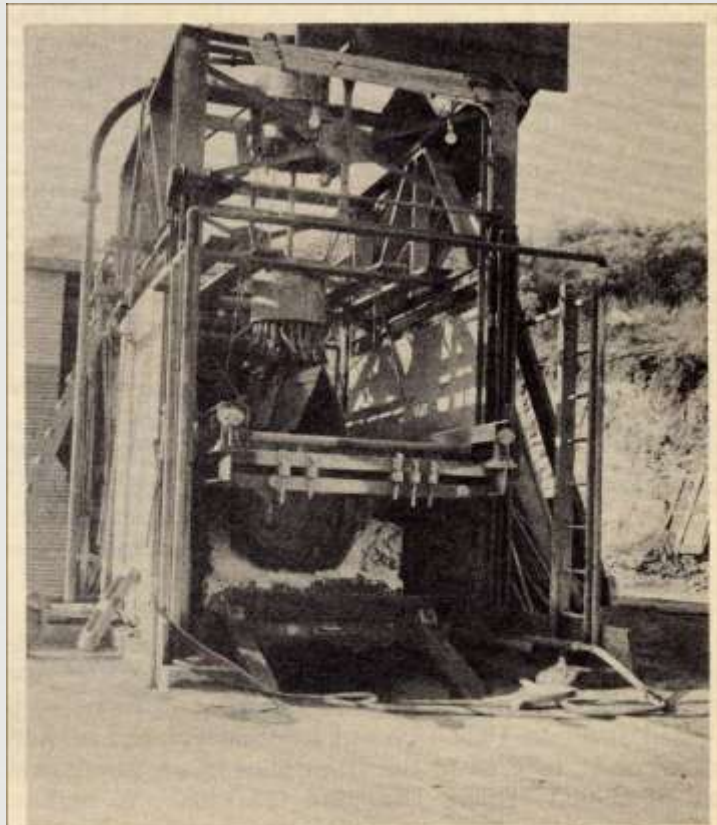


FIGURE 3. Gang saw with partly completed cuts in black granite boulder. Pacific Cut Stone and Granite Company quarry, Escondido.

Gang saw with partly completed cuts in black granite boulder. Pacific Cut Stone and Granite Company quarry, Escondido.

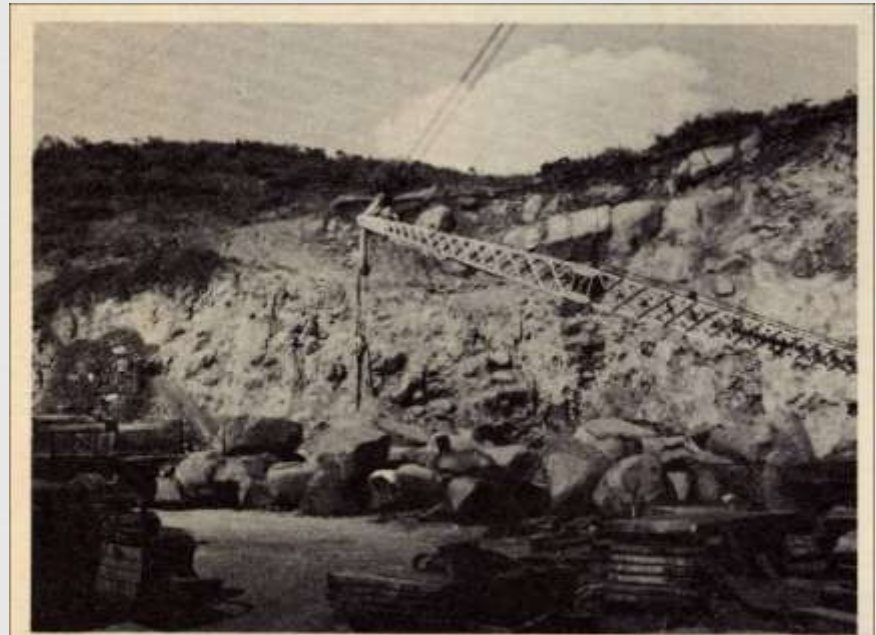


FIGURE 4. View of quarry with residual boulders in place and stockpiles for gang saw processing. Sawed slabs in foreground. Pacific Cut Stone and Granite Company quarry, Escondido.

View of quarry with residual boulders in place and stockpiles for gang saw processing. Sawed slabs in foreground. Pacific Cut Stone & Granite Company quarry, Escondido.

San Diego County, California (Cont'd) (1898 – Present Day)



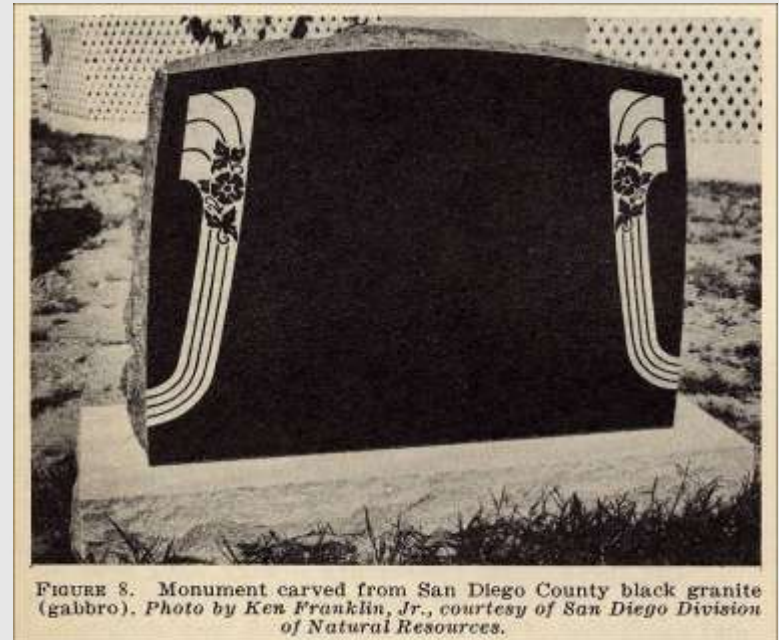
FIGURE 5. General Petroleum Building, Los Angeles. San Diego County black granite used on lower part of building and terra cotta on upper section.
Art Streib Studio photo, courtesy of General Petroleum Corporation.

General Petroleum Building, Los Angeles. San Diego County black granite used on lower part of building and terra cotta on upper section.

San Diego County, California (Cont'd) (1898 – Present Day)



**Monument made of
San Diego County granodiorite.**



**Monument carved from San Diego
black granite (gabbro) .**

San Diego County, California (Cont'd) (1898 – Present Day)



Santee Granite Quarry, San Diego County.



**Sheet structure at Simpson quarry,
Santee.**



View into Cameron-Deering quarry, Lakeside.
Distribution of the many fractures in the rock is
such that uniform blocks are difficult to obtain.



**Perfect joint plane.
Cameron-Deering quarry, Lakeside.**

San Diego County, California (Cont'd) (1898 – Present Day)



FIGURE 15. Valley Granite Company quarry, Escondido. General view of quarry workings.

**Valley Granite Company quarry,
Escondido. General view of quarry
workings.**



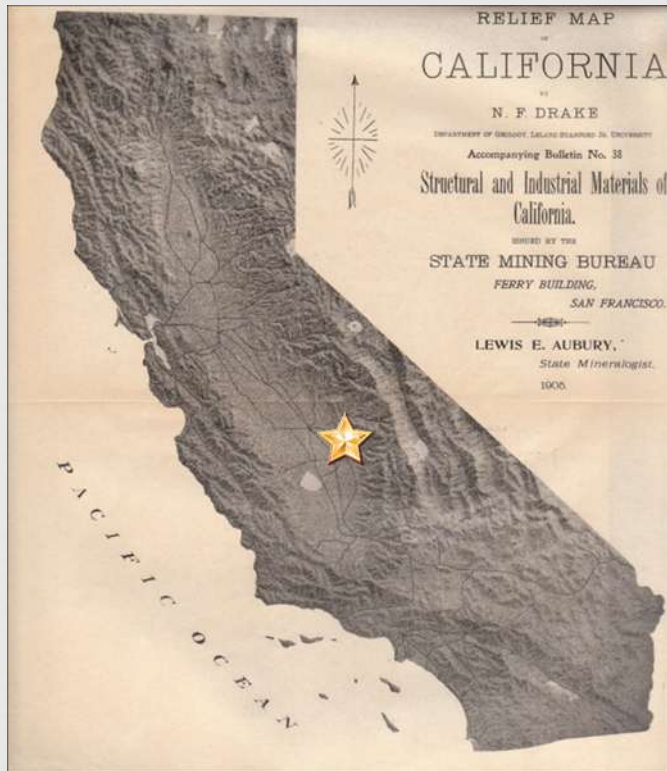
FIGURE 16. Vertical west face of McGee quarry, near Pala, as it appeared in July 1947. Note large boulders in upper part of thick, well-defined "creep" layer, which also contains smaller boulders that show some exfoliation. The underlying residual material, with its large, spheroidally weathered boulders, is well exposed to the right of the man. Its sharp upper contact is elsewhere concealed by slumped debris and quarry waste. Prepared from a sketch by R. H. Jahn.

**Vertical west face of McGee quarry, near Pala, as it
appeared in July 1947.**

Note large boulders in upper part of thick-well-defined "creep" layer, which also contains smaller boulders that show some exfoliation. The underlying residual material, with its large, spheroidally weathered boulders, is well exposed to the right of the man. Its sharp upper contact is elsewhere concealed by slumped debris and quarry waste. *Prepared from a sketch by R. H. Jahn.*

Tulare County Granite Quarries, California

(Prior to 1892 – Present Day)



Tulare County Granite Quarries, California

(Prior to 1892 – Present Day)



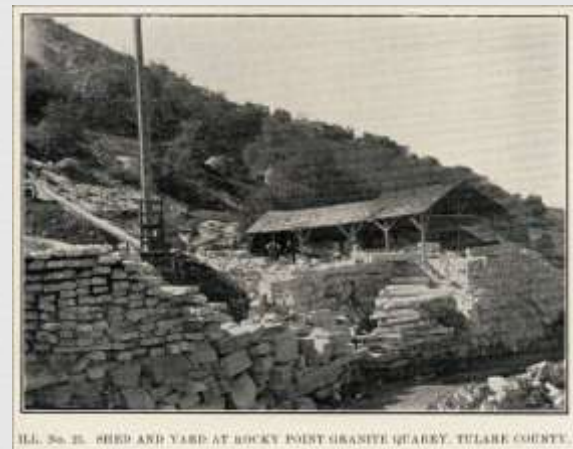
Quarry of the California Granite Company,
situated 4 miles east of Porterville.



Number 2 Quarry of California Granite Company



The R. Johnson Granite Quarry, Porterville, Cal.
(postcard photo)



Shed and Yard at Rocky Point Granite Quarry, Tulare County

Limestone Quarries in California



**Limestone Quarry of Henry Cowell
Lime & Cement Company,
Concord, Contra Costa County.**



Cowell limestone quarry in Contra Costa County



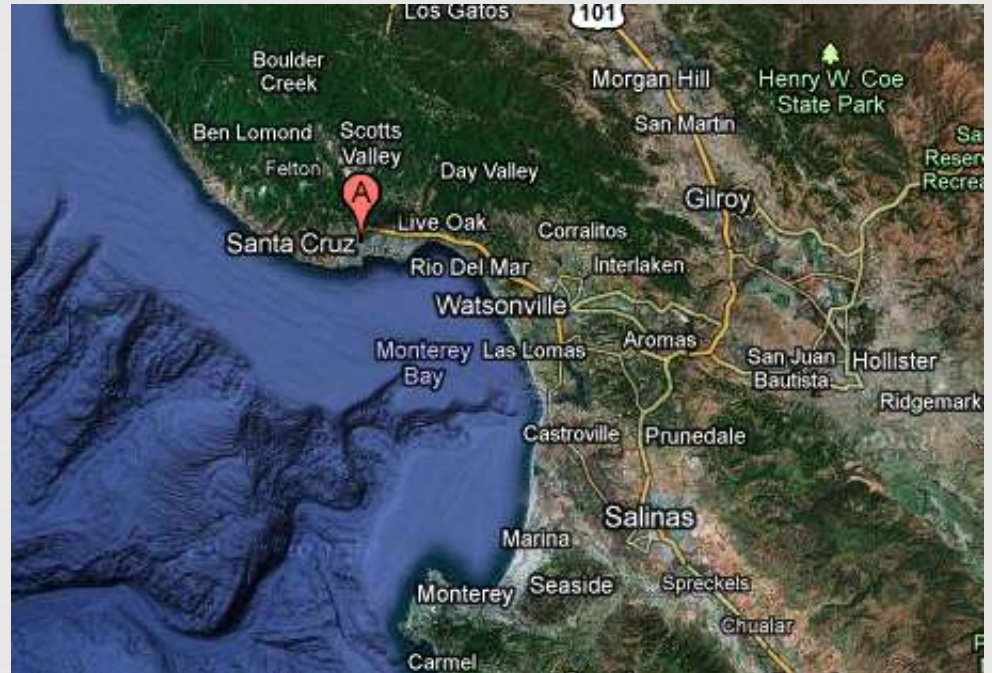
**I. X. L. Limestone Quarry, Felton,
Santa Cruz County**



**Fall Creek - I. X. L. / Henry Cowell Kilns
& Quarry Area**

(Photo by Peggy B. Perazzo)

Santa Cruz County, California



Limestone Quarries in California



ILL. No. 34. SANTA CRUZ LIMESTONE QUARRY, 18 MILES N. W. OF SANTA CRUZ.

Santa Cruz Limestone Quarry,
18 miles N. W. of Santa Cruz



ILL. No. 32. H. COWELL & CO.'S LIMESTONE QUARRY, 3 1/2 MILES NORTHWEST OF SANTA CRUZ.

H. Cowell & Co.'s Limestone Quarry,
3 1/2 miles northwest of Santa Cruz.

**Henry Cowell Ranch Buildings & Kilns,
University of California, Santa Cruz Campus, Santa Cruz**
(Photographs by Peggy B. Perazzo)



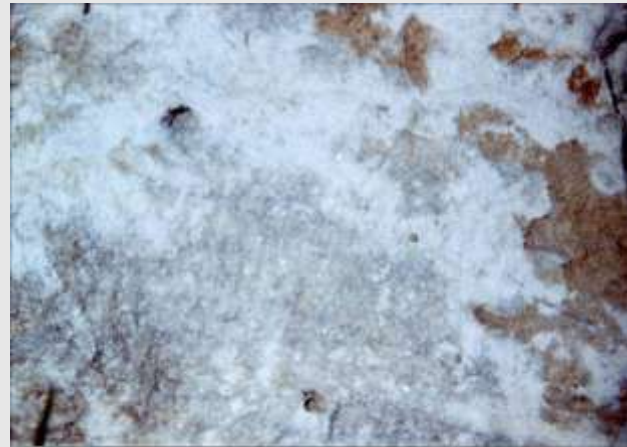
Upper Quarry & Kilns, University of California, Santa Cruz Campus, Santa Cruz

(Photographs by Peggy B. Perazzo)



Limestone/Marble Samples Examples from Cowell Quarries, University of California, Santa Cruz Campus, Santa Cruz

(Photographs by Peggy B. Perazzo)



Close-up of Marble from the Upper Quarry

California Marble Quarries (circa 1906) (1888 or earlier – early- to mid-1900s – but prior to 1947)



ILL. No. 38. OLETA MARBLE QUARRY, PLYMOUTH, AMADOR COUNTY.

Oleta Marble Quarry, Plymouth, Amador County



**The Oleta Marble Quarry
as it appeared in 2003**

Inyo County, Ca



The Inyo Dolomite (Marble) Quarries in near Lone Pine in Inyo County (Contd.)



F. W. Aggregates Quarries at a Distance



**One of the White
F. W. Aggregates Quarries**



Other F. W. Aggregates Quarry Sites



Other F. W. Aggregates Quarry Sites

**The Inyo Dolomite (Marble) Quarries
in near Lone Pine in Inyo County (Contd.)**



Two Main White F. W. Aggregates Dolomite Quarries

The Inyo Dolomite Quarries Looking from the Ghost Town of Dolomite



**Looking towards the
F.W. Dolomite Quarry**



**Looking towards the
F.W. Dolomite Quarry**



Old Meeting Hall in Dolomite



**Base of meeting hall in Dolomite exhibiting all of
the colors of dolomite quarried on the property**

Constructed from Inyo Dolomite



**Business Sign on Piece of Dolomite from the
Nearby Quarries**



**Cemetery stone made from one of
the colors of the locally quarried
dolomite**

California Marble Quarries (circa 1906) (Contd.)



**Lower Quarry - Vaughan
Marble Company, Cadiz, San
Bernardino County**



**Marble Mountain - Site of upper quarry
of Vaughan Marble Company near Cadiz,
San Bernardino County**



**Marble Mill & Yard, Colton,
San Bernardino County**



**Mojave Consolidated Development Company's
Verde Antique Marble Quarry, San Bernardino
County. From 1 1/2 miles distant.**

California Marble Quarries (circa 1906) (Contd.)



ILL. No. 41. MOJAVE CONSOLIDATED DEVELOPMENT COMPANY'S VERDE ANTIQUE MARBLE QUARRY, VICTORVILLE, SAN BERNARDINO COUNTY.

**Mojave Consolidated Development Company's
Verde Antique Marble Quarry, Victorville, San
Bernardino County**



ILL. No. 46. ARAGONITE QUARRY (KESSELER'S ONYX MARBLE), SAN LUIS OBISPO CO.

**Aragonite Quarry (Kessler's Onyx Marble),
San Luis Obispo Co.**

Tuolumne County, CA



Columbia, Tuolumne County, Marble Quarries

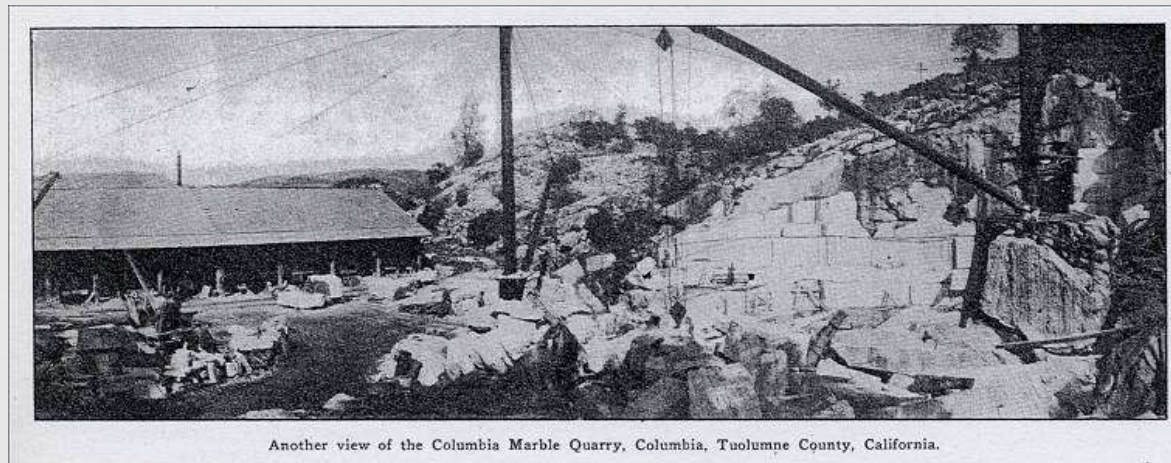
(Prior to 1868 – Present time - industrial minerals quarrying)



**Columbia Marble Company's
Quarry, Tuolumne County**



Columbia Marble Quarry, Columbia



Another view of the Columbia Marble Quarry

Columbia, Tuolumne County, Marble Quarries (1998) (Contd.)



**Part of one of the old Columbia
Marble Quarries (1998)**



**The Bell Marble Works Quarry, located on the Marble
Quarry R.V. Park in Columbia (1998)**

Marble Quarried at Indian Diggings, Tuolumne County



Indian Diggings Limestone Deposit, El Dorado County



Pile of Indian Diggings Marble (2003)



Cemetery stone of Indian Diggings Marble in the Indian Diggings Cemetery (2003)



Close-up of one of the cemetery stones made from Indian Diggings Marble (2003)

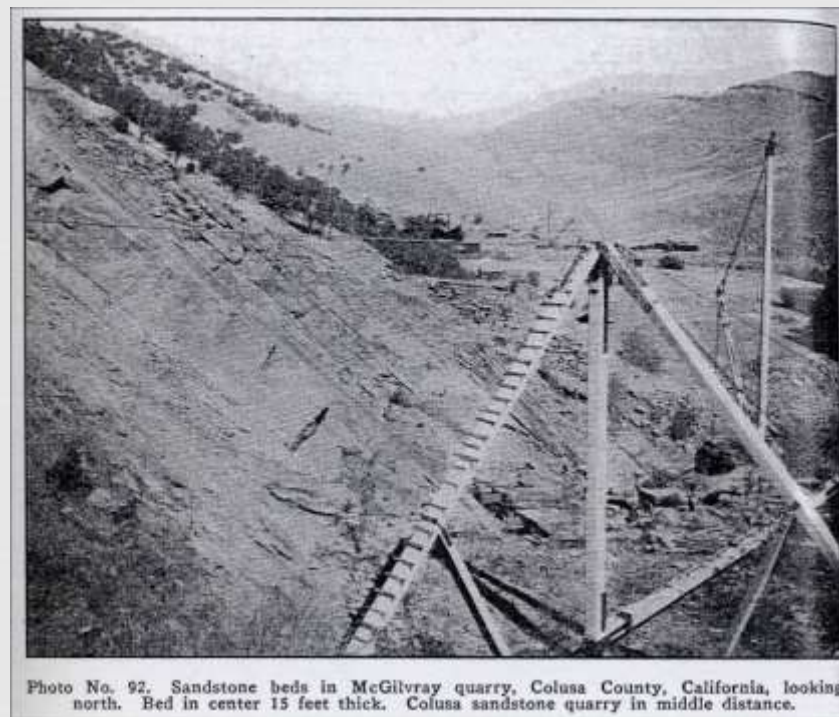
California Sandstone – Colusa County Sandstone Quarries



Colusa Sandstone Co. Quarry (aka the Knowles Quarry & today known as the “Brownstone Quarry,” Colusa County



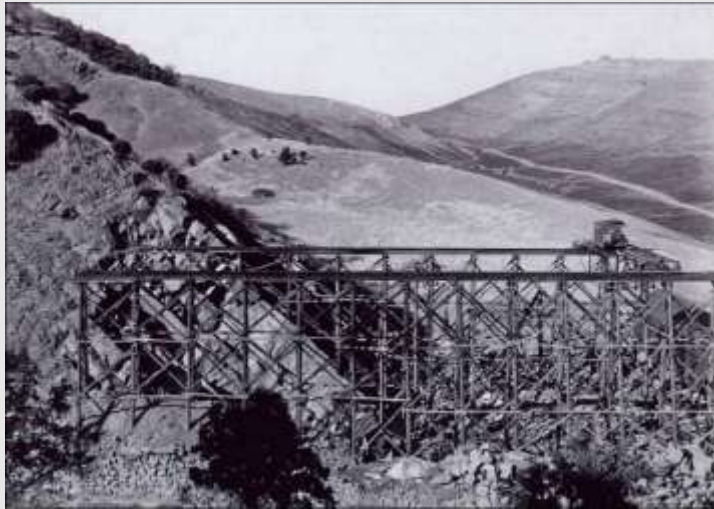
**Colusa Sandstone Quarry. View
from south end of quarry**



**Sandstone beds in McGilvray quarry,
Colusa County,**

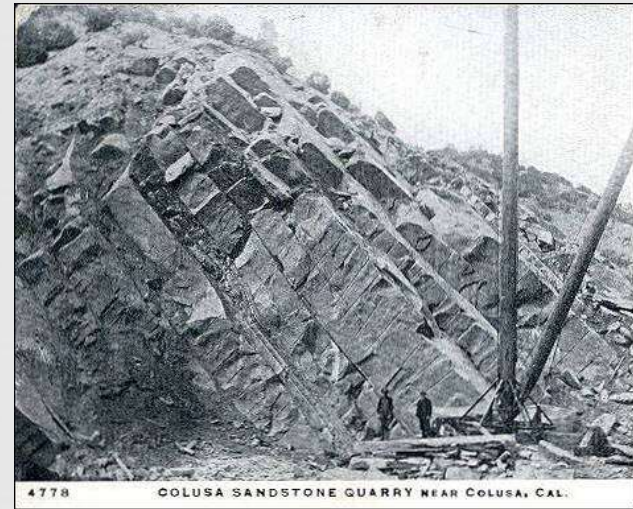
California, looking north. Bed in center 15 feet thick. Colusa sandstone quarry in middle distance.

**Colusa Sandstone Co. Quarry (aka the Knowles Quarry &
today known as the “Brownstone Quarry,”
Colusa County (Contd.)**



**Quarry of Colusa Stone Company in upper
part of Chico sandstone beds.**

One-half mile east of Sites, Colusa County, California.
September 16, 1900.” (Used with permission, U. S.
Geological Survey Photographic Library.)



**In quarry of Colusa Sandstone
Company, Colusa County,
California. (circa 1913)**

**Colusa Sandstone Co. Quarry (aka the Knowles Quarry &
today known as the “Brownstone Quarry,”
Colusa County (Contd.)**



**The Colusa Sandstone
Co./Knowles/Brownstone Quarry
(2006)**



**The Colusa Sandstone
Co./Knowles/Brownstone Quarry
(2010)**

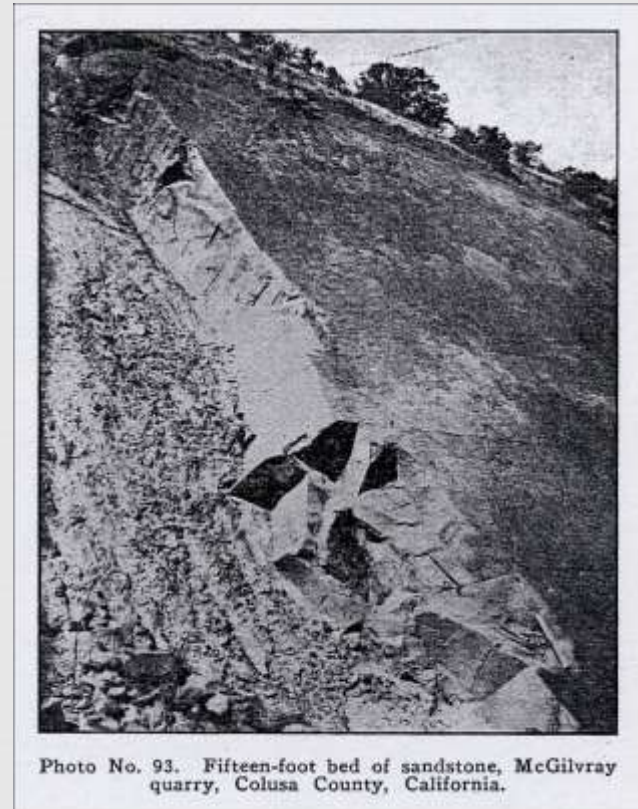
McGilvray Sandstone, Colusa County – Inactive Today



A portion of the face of the McGilvray Sandstone Quarry, Colusa County.



The McGilvray Quarry
(inactive; Photo taken 2006)



Fifteen-foot bed of sandstone, McGilvray quarry, Colusa County, California (circa 1913).

Buildings Constructed from Colusa County Sandstone



Kohl Building, corner of California & Montgomery streets, San Francisco. Built of Colusa Sandstone.



**St. Francis Hotel, San Francisco.
Colusa Sandstone.**



**St. Francis Hotel, San Francisco
(December, 1913). Colusa sandstone.**

Fort McDowell Sandstone Quarry on Angel Island, Marin County

(prior to 1868 – after 1916)



Franklyn Sandstone Quarry, Contra Costa County

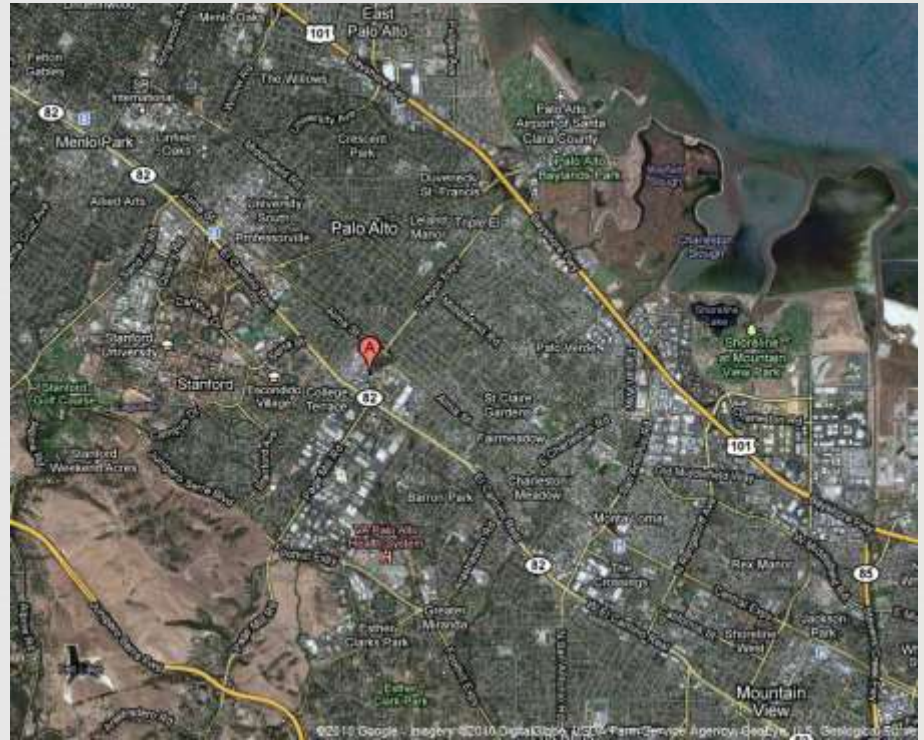
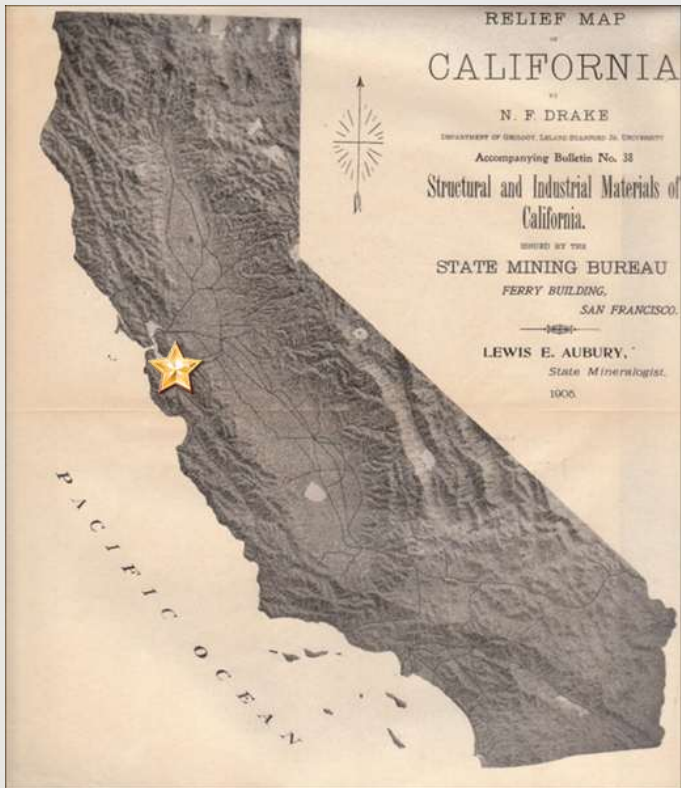


ILL. No. 55. FRANKLYN SANDSTONE QUARRY, CONTRA COSTA COUNTY.
Wilson-Lyon Construction Company.

(105)

Franklyn Sandstone Quarry, Contra Costa County.
Wilson-Lyon Construction Company.

The Stanford / Goodrich Sandstone Quarry, Santa Clara County (before 1876 - ?)

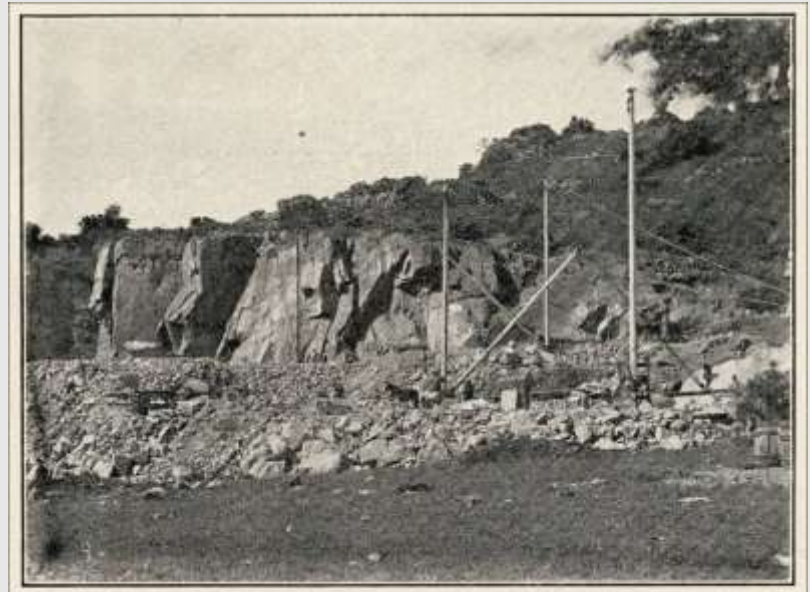


The Stanford / Goodrich Sandstone Quarry, Santa Clara County



ILL. No. 63. STANFORD QUARRY, SANTA CLARA COUNTY.
(Goodrich Sandstone Quarry. McGilvray Stone Company.)

**Stanford Quarry, Santa Clara County.
(Goodrich Sandstone Quarry. McGilvray Stone
Company.)**



ILL. No. 64. STANFORD SANDSTONE QUARRY, SANTA CLARA COUNTY.
(McGilvray Stone Company.)

(135)

**Stanford Sandstone quarry, Santa Clara County.
(McGilvray Stone Company.)**

Structures made from Sandstone from the Goodrich / Stanford / Graystone Quarry



General view of quadrangle buildings, Stanford University, constructed of sandstone from Graystone Quarry.



Memorial Arch, with church in background, Stanford University, showing types of carved work with the sandstone.

Benicia Sandstone Quarries, Solano County

(about 1852 – about 1854 ?)



Benicia Arsenal Sandstone Quarries, Benicia, California



**Close-up of site of old sandstone quarry,
Benicia Arsenal**



**Site of old quarry next to Benicia
Arsenal Powder Magazine #10**



**Site of quarry at a distance across freeway,
once a part of the Benicia Arsenal grounds**

Structures Built from Sandstone Quarries on the Arsenal Grounds

The previous unassuming quarry holes produced the sandstone for the Benicia Arsenal buildings.



Benicia Clock Tower



Detail of wall of Benicia Clock Tower



Camel Barn 7 (on left) & Office (on right)



Benicia Powder Magazine 10

Benicia Sandstone Quarries in the Town of Benicia, Solano County



**Old quarry location along Semple
Crossing from right side of quarry.**



**Old quarry location along Hospital Road
from left to right side of quarry**

Patrick Dillon's Sandstone Quarry, Benicia, Solano County



Location of Patrick Dillon's Sandstone Quarry



"This is part of Patrick Dillon's Sandstone House, 1856-1969. Benicia State Park."

Sandstone Monuments & Coping in the Benicia Cemetery, Benicia, Solano County



**Benicia Sandstone
monument and coping**



Family plot wall of Benicia sandstone



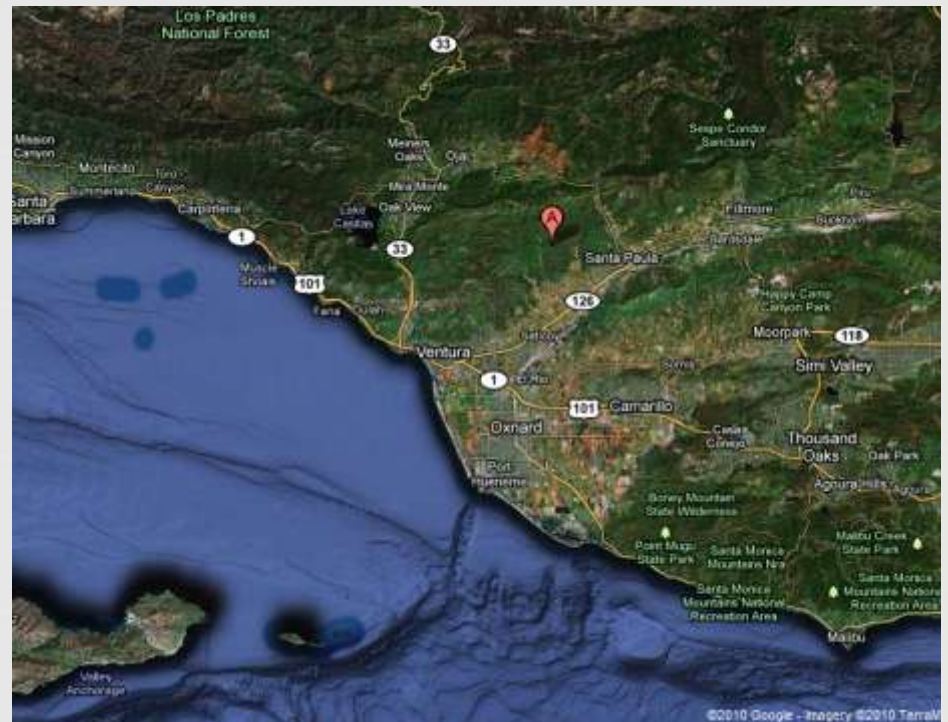
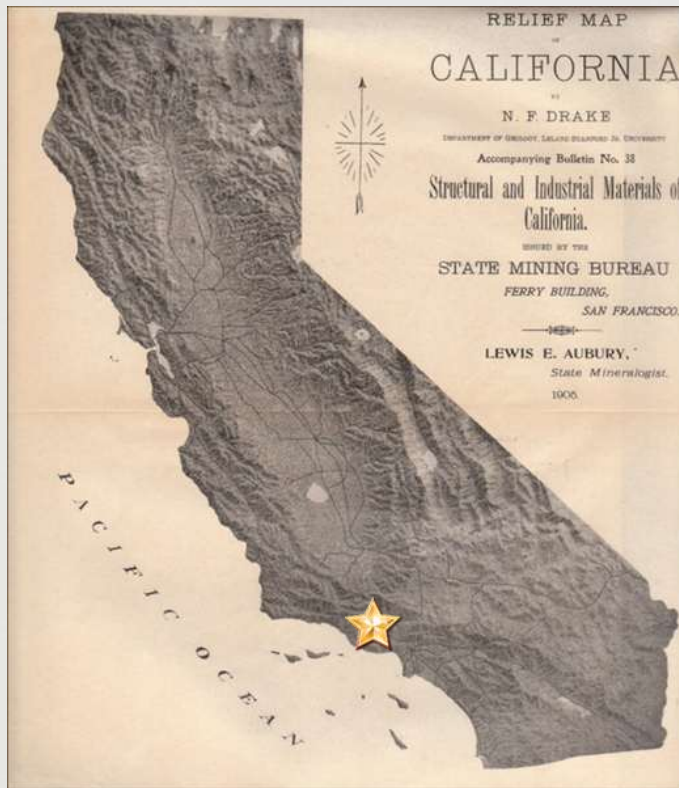
**Base of monument and coping
of Benicia sandstone**



Benicia sandstone monument

Sespe Canyon Sandstone Quarries, Ventura County

(1888 – early 1900s)



Sespe Canyon Sandstone Quarries, Ventura County



View of Sespe Cañon, Ventura County,
showing “Coldwater Anticline.”



Sample of Ventura County Sandstone
(photograph by Labe Kopelov of Kopelov
Cut Stone, Inc., Bernalillo, New Mexico)



Close-up of Ventura Sandstone
(photograph by Labe Kopelov of Kopelov
Cut Stone, Inc., Bernalillo, New Mexico)

Sespe Canyon Sandstone Quarries, Ventura County



Stone wall of purplish-brown Ventura County Sandstone (photograph by Labe Kopelov of Kopelov Cut Stone, Bernalillo, New Mexico)



Top of tunnel built of Ventura County Sandstone (photograph by Labe Kopelov of Kopelov Cut Stone, Bernalillo, New Mexico)

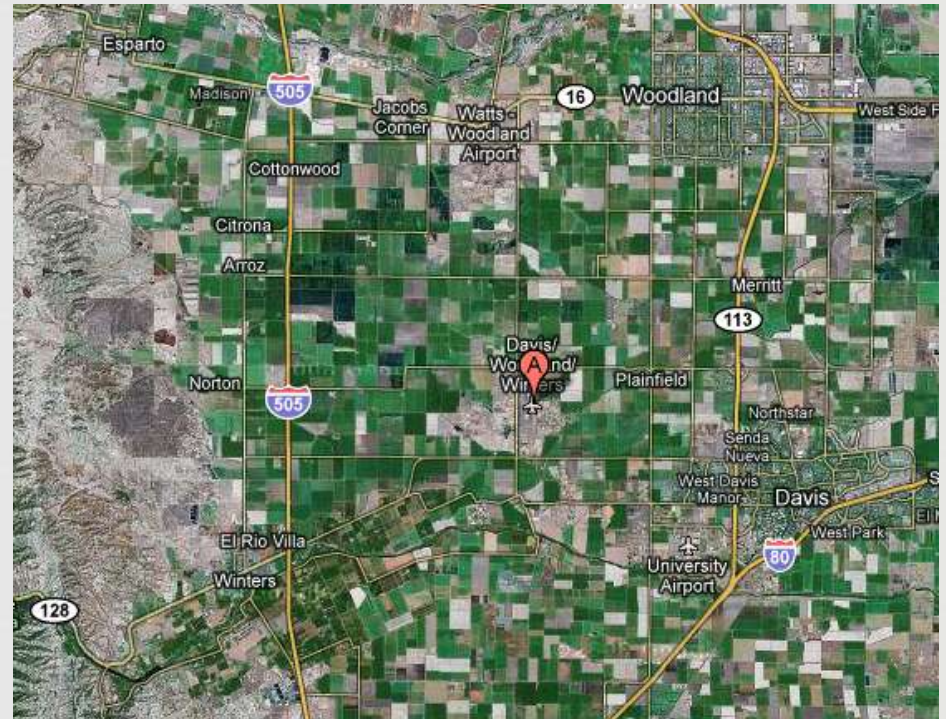


Digg's Building (on right) in Woodland, Yolo Co., California constructed of Ventura County Sandstone (early 1890s)



Upper story of the Digg's Building in Woodland, Yolo Co., California, constructed of Ventura County Sandstone (early 1890s)

Putah Stone Quarry (aka Winters Sandstone), Yolo County (mid-1880s – circa 1910 ?)



Putah Stone Quarry (aka Winters Sandstone), at Devil's Gate, Yolo County

(located about 9 miles from Winters)



Michael's Building, constructed in 1893, of sandstone quarried at the Putah Creek quarry (Woodland, Yolo Co., California)



Area adjacent to Monticello Dam where we believe the quarry was located.
(David Wilkinson, Tom Potters, Pat, & I went on this field trip.)



Curbstone in Winters Cemetery
Winters Sandstone, Winters, Yolo Co.

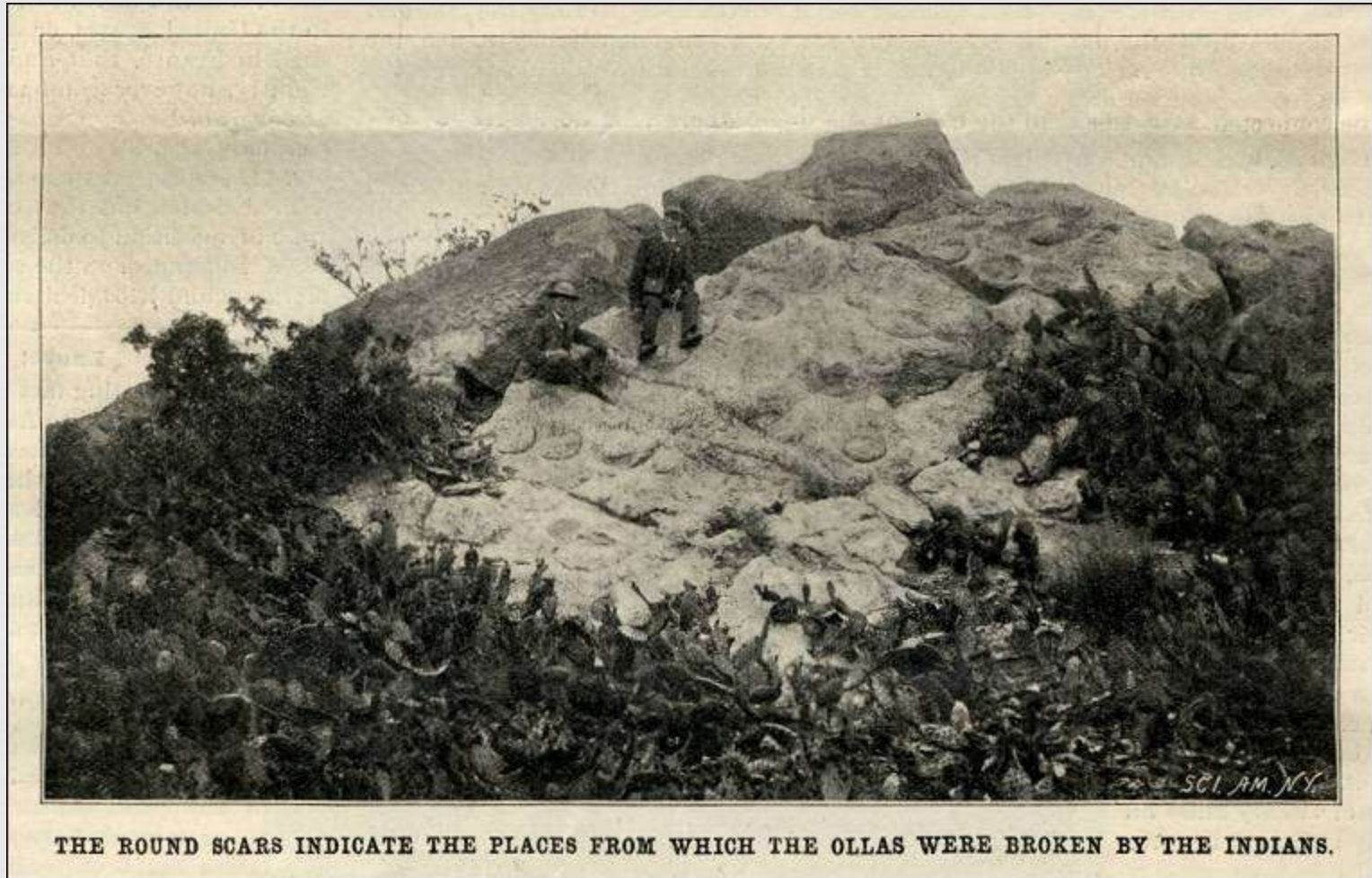


David Wilkinson, author of *Crafting a Valley Jewel*, next to Winters Sandstone monument in the Winters Cemetery, Yolo Co., California

Serpentine Quarries in California



**Serpentine / Soapstone Quarry on Santa Catalina Island, Los Angeles County
(from the time of the California Indians – in operation in 1954)**

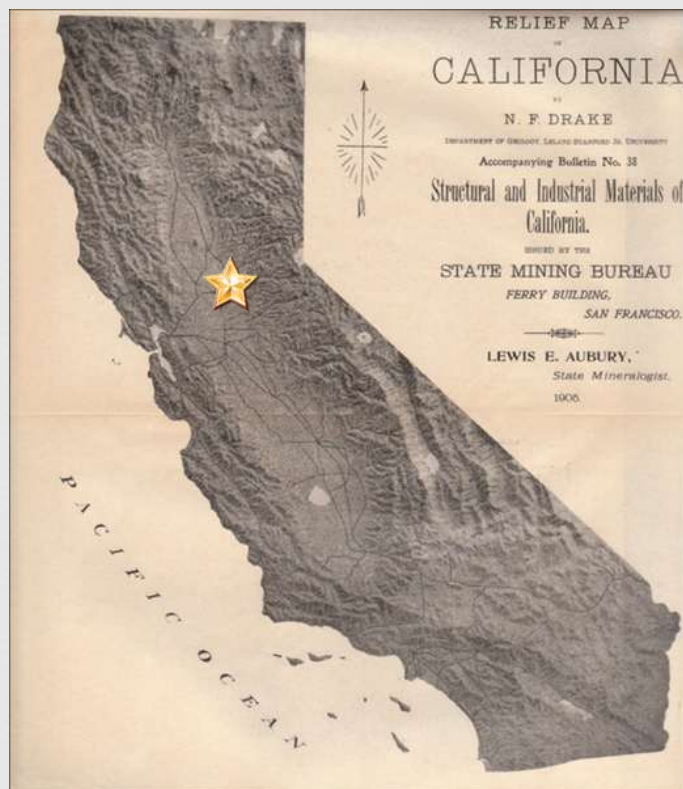


Serpentine / Soapstone Quarry on Santa Catalina Island, Los Angeles County
(from the time of the California Indians – in operation in 1954)
(Contd.)



SERPENTINE QUARRY AND MILL, SANTA CATALINA ISLAND, CAL.

Slate Quarrying in El Dorado County, California



Slate Quarrying in California



ILL. No. 69. EUREKA SLATE QUARRY, SLATINGTON, EL DORADO COUNTY.

**Eureka Slate Quarry, Slatington,
El Dorado County.**



ILL. No. 70. VIEW IN YARD NEAR QUARRY OF THE EUREKA SLATE COMPANY, EL DORADO COUNTY.

**View in yard near quarry of the Eureka Slate
Company, El Dorado County.**

Photos of Volcanic & Intrusive Rock Quarries



ILL. No. 72. NEWMAN'S TRACHYTE QUARRY, 2 MILES SOUTH OF NAPA.

**Newman's Trachyte Quarry,
2 miles south of Napa.**



ILL. No. 73. WING'S TRACHYTE QUARRY, NAPA.

Wing's Trachyte Quarry, Napa.

Photos of Volcanic & Intrusive Rock Quarries & Structures (Contd.)



Wylie's Rhyolite Quarry, San Luis Obispo County.



Volcanic tuff quarry, Los Berros, San Luis Obispo County.



St. Helena Public School. Constructed of Trachytic Tuff from Moffat Quarry, near St. Helena, Napa County.



Carnegie Library, Petaluma. Constructed of Trachytic Tuff from Stony Point Quarry.

Paving Block Quarries in California

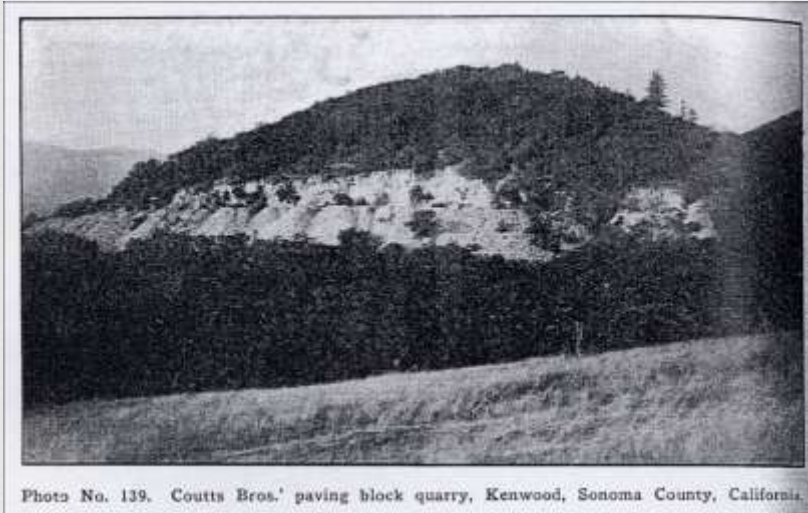


Photo No. 139. Coutts Bros.' paving block quarry, Kenwood, Sonoma County, California.

**Coutts Bros.' paving block quarry, Kenwood,
Sonoma County, California.**

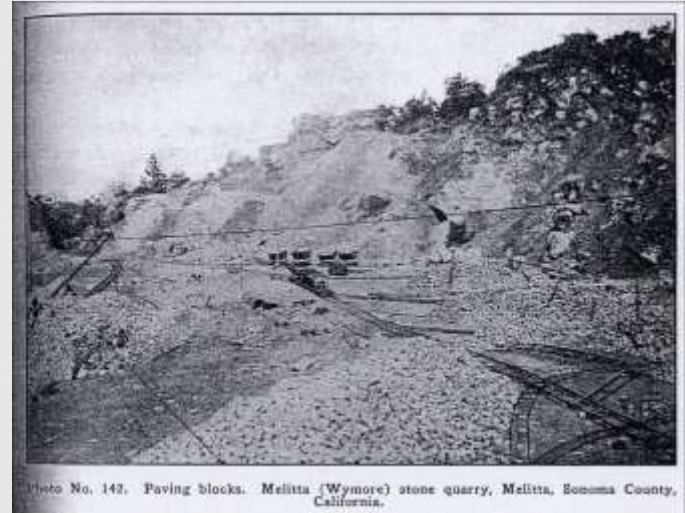


Photo No. 142. Paving blocks. Melitta (Wymore) stone quarry, Melitta, Sonoma County, California.

**Paving blocks. Melitta (Wymore) stone quarry,
Melitta, Sonoma County, California.**

Paving Blocks in Old Sacramento, California



Paving Block Street in Old Sacramento

Flagstone Quarries in California

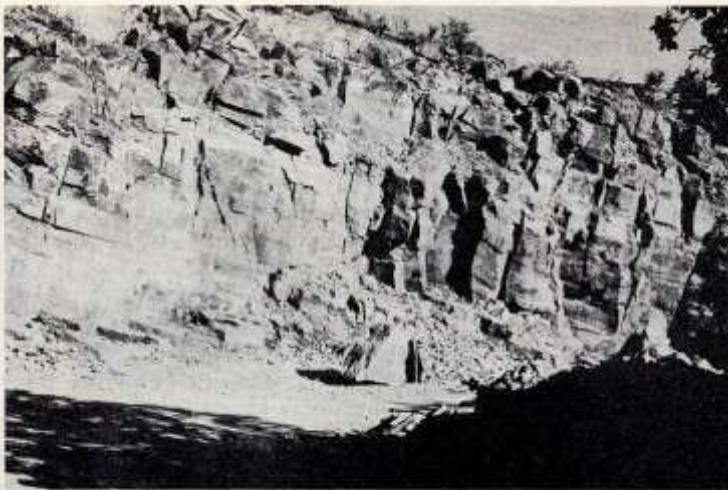


FIG. 10. Riebeckite rhyolite in the Valley of the Moon flagstone quarry, northeast of Glen Ellen, Sonoma County. Flow banding and jointing are parallel. Photo by H. Ries.

Riebeckite rhyolite in the Valley of the Moon flagstone quarry, northeast of Glen Ellen, Sonoma County. Flow banding and jointing are parallel.



Nun's Canyon Quarry, Glen Ellen, Sonoma County
Located in the vicinity of the Valley of the Moon flagstone quarry. (Photo by Hal Weise of Nun's Canyon Quarry)